



ECONOMIC PROFILE

2011



Marshfield's excellent quality-of-life has earned our community the ranking of 5th out of 126 small towns and cities across the nation by Forbes Magazine. Communities with populations under 100,000 were ranked on the following five measures:

- Short commute times
- Educational outcomes
- Median household income
- Rate of home ownership
- Housing affordability

Marshfield/Wood County was also ranked as the 20th best dream town.

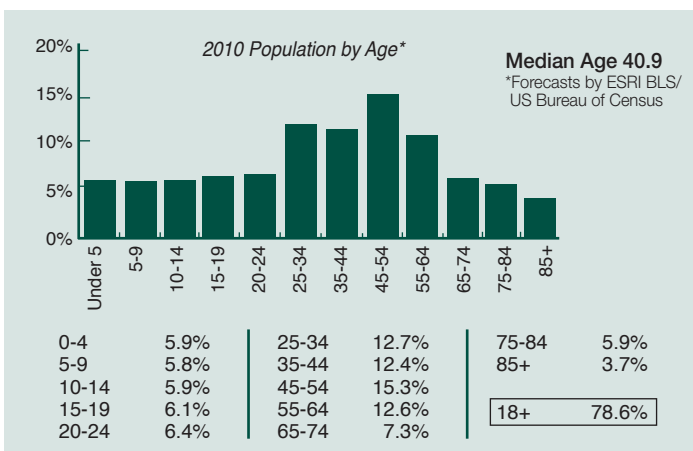


Welcome to Marshfield!



2010 Population

City 19,451 *Service Area: (10 miles) 34,357
County: (Wood) 77,123 (20 miles) 62,115
 (Marathon) ... 136,874



Transportation

Highways

Highways Serving Area: State Hwys. 13, 10, 97, 29, and I-39.

Distance Nearest Interstate:

40 miles to I-39 (formerly Hwy 51); 60 miles to I-90/94

Trucking

Motor Freight Carriers
 Serviced by 15 area carriers with overnight service to Chicago and Minneapolis/St. Paul.

Contract Haulers

Roehl Transport, Inc.
 de Boer, Inc.
 Draxler Transport, Inc.

Waterways

Nearest Navigable Waterway:

Lake Michigan - Green Bay - 133 mi. from Marshfield

Mississippi River - La Crosse - 101 mi. from Marshfield

Port Facilities:

Green Bay and La Crosse

Bus Service

Greyhound Bus Lines Shuttle
 Bus Parcel Service Available
 Limo Service Available

Railroads

CN Railroad
 Piggyback Service: Yes
 Frequency of Switching Service: Daily

Air Transportation

Regional Airport

Central Wisconsin Airport (CWA) located in Mosinee, 35 miles from Marshfield.

Commercial Service: American/American Eagle, Northwest/Mesaba, United/United Express, Midwest/Midwest Connect
 Rental cars are available.

Overnight express package service is provided by UPS, Federal Express and USPS.

Marshfield Municipal Airport

Runway length: 5,000 ft.
 Surface: Blacktop
 Aircraft Maintenance: Yes 24-hour Jet Fuel
 S.D.F. Landing System Charter Service

Originally referred to as "Hub City," due to the many trains that traveled through, Marshfield continues to be a hub for businesses and families alike. Our central location, along with a municipal airport, a regional airport within 35 miles, plus the four-lane expansion of US Hwy. 10 offers easy access to larger, metro markets.

Marshfield boasts a small town lifestyle ideal for raising a family yet features big town opportunities. Top-notch schools, including a two-year University and Technical college offer excellent life long learning. A 100-acre park and zoo along with an abundance of year round recreational options, as well as a multi-model trail system attract young and old alike. Arts and culture abound in the area.

World-renown health and research facilities have given this community national attention drawing patients, visitors and employees from all around the globe. Other major industries include metal-working/stainless steel, agricultural and dairy food processing, wood products and transportation/ distribution. Here you will find vast employment opportunities.

A historic downtown, with a newly reconstructed South Central Avenue features more than 200 businesses. Antique stores, a variety of eateries from coffee shops to fine ethnic restaurants, and many specialty shops attract visitors to this growing business district.

Five business/industrial parks provide land options to fit any project. Economic development assistance is available on projects large and small including access to local and state incentive programs.

Come and experience our way of life!

Utilities and Service

Electricity

Distributor: Marshfield Utilities (A municipal-owned utility)

Water

Supplier: Marshfield Utilities
 Source: 14 wells (fluoridated)
 Maximum Daily Capacity: 4.56 MGD
 Pumping Capacity: 9,150 GPM
 Peak Demand: 3.1 GPD
 Total Hardness: 300 P.P.M.
 Storage Capacity: Overhead 1M gal. Ground 3,500,000 gal.

Sewers

Storm Sewer: Yes
 Sanitation Sewer: Yes
 Treatment Plant: Secondary Oxidation ditch
 Capacity: 4.63 MGD, Present Load: 3.4 MGD
 Peak: 28 MGD

Natural Gas

Gas Supplier: TransCanada (ANR Pipeline)
 Gas Distributor: Wisconsin Gas Co.

Financial Institutions

Banks

Bank	Total Deposits - 2010
Associated Bank Marshfield (2 locations)	\$184.4M
Community Bank of Central Wis.	\$21M
Guaranty Bank	\$1.8M
Heritage Bank	\$49.2M
M&I Central Bank & Trust (2 locations)	\$185.2M
Forward Financial Bank (2 locations)	\$127.7M
Pioneer Bank (2 locations)	\$16.7M
State Bank Marshfield	\$7.6M
Time Federal Savings Bank	\$131.7M

Credit Unions

Central City Credit Union (Includes Stevens Point Location)	\$151.7M
First Choice Credit Union	\$22.2M
Marshfield Medical Center Credit Union	\$45.8M
Valley Communities Credit Union	\$6.0M

Government Services

Form: Mayor-Council with 10 elected Council Members and City Administrator

Police Dept. Personnel: 47 with 39 officers

Fire Dept. Personnel: 37

Equipment: 1 engine/skyboom, 3 pumps, 1 ladder truck, 4 ambulances, and 1 medium duty rescue, 4 special response trailers, 2 station vehicles

Fire Insurance Rating: Class 4

Planning Commission: 7 Member Commission

Industrial Plan Approval: Industrial Park Authority

Zoning Regulations: Zoning Ordinance; Subdivision Control Ordinance

Taxes

GROSS TAX - CURRENT TAX YEAR 2010

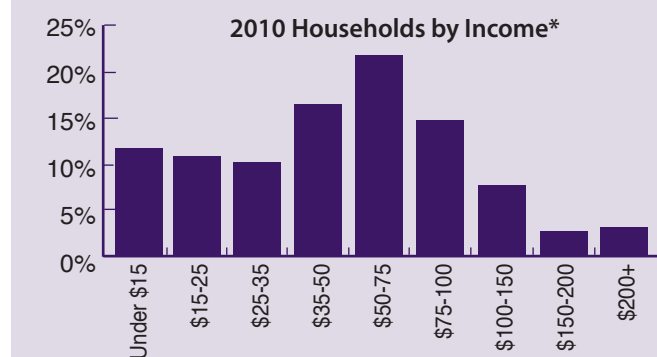
LOCAL PROPERTY TAXES:	Wood County	Marathon County
Full Value Rate	\$23.54	\$23.74
Net Tax Rate/\$1000	\$23.23	\$22.99

Total Equalized Value of all City of Marshfield Properties: \$1,332,746,600

STATE TAXES:

Type	Rate
Retail Sales: Wood County	5.5%
Marathon County	5.5%
Personal Income: (married, filing jointly)	
Minimum Rate	4.60%
Maximum Rate	6.75%
Corporate Income:	7.9% (flat)
State Capital Gains:	60% Exclusion
Gasoline:	30.9¢/gal.

Income



2010 Household Income Base: 8,691

Under \$15,000	13.7%	\$75,000 - \$99,999	13.9%
\$15,000 - \$24,999	10.9%	\$100,000 - \$149,999	6.8%
\$25,000 - \$34,999	10.7%	\$150,000 - 199,999	1.7%
\$35,000 - \$49,999	17.4%	\$200,000 +	2.6%
\$50,000 - \$74,999	22.1%		

Average Household Income: \$59,843

Housing

	No. of Parcels	No. of Living Units
Total Units	6,209	9,732

*Does not include living areas above businesses

Estimated Construction Cost of New Housing: \$120-140+/sq. ft.

Rental Cost Range:

Less than \$300	5%	\$800 & over	5%
\$300 to \$549	65%	Median Rent	\$500
\$550 to \$700	25%		

Average 2010 Sale Price: \$138,000 (Single Family Home - City of Marshfield)

Per Capita Income*

2000	\$21,985
2010	\$27,676

(Source ESRI BLS/US Bureau of Census) *Income represents the preceding year



Marshfield Mill Creek

Located at the intersections of Business Hwy. 13 and US Hwy. 10, Marshfield's Mill Creek Business Park offers a great location. Flexible zoning, beautiful lots and a multi-modal trail makes this a perfect location for your new or expanding business.

General Information

- 165 acres
- \$10,000 - \$17,000/per acre
- Borders Business Hwy. 13 & US Hwy. 10
- 154 developable acres (64 zoned M-1/90 zoned B-3)
- Multi-Modal Trail
- Fiber available

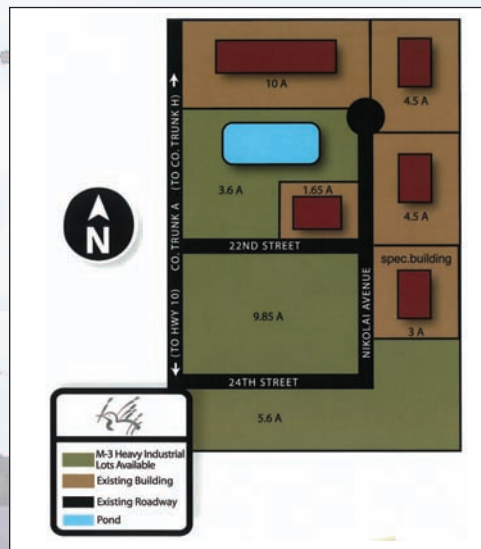


Norwood Industrial Park

This 60-acre, privately-owned Industrial Park is located on Marshfield's East side, one block North of the new Hwy. 10/13 bypass. Streets are set up with mountable curb and gutter and are asphalt paved. All city utilities are available. Convenient horseshoe layout for easy access by semi truck traffic.

General Information

- 60 acres, privately owned
- Bordered by County Hwy. A
- Easy access to US Hwy. 10
- Nearly 20 acres available
- 24,500 sq. ft. spec building for sale or lease

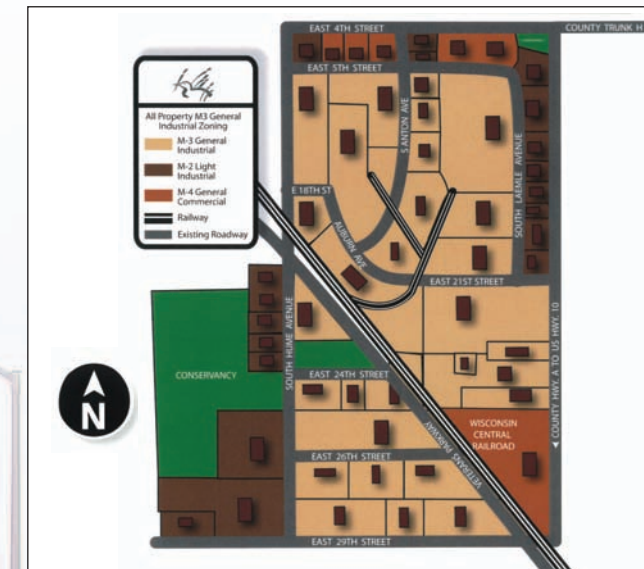


Marshfield East Industrial Park

Marshfield organized Wisconsin's first community industrial park. Located at the intersection of County Hwy's A & H, the East Industrial Park provides expansion opportunities for distribution and manufacturing firms. Call to confirm availability.

General Information

- \$5,500 per acre
- 260 acres
- Bordered by County Hwy. A
- Easy access to U.S. Hwy. 10
- Rail access

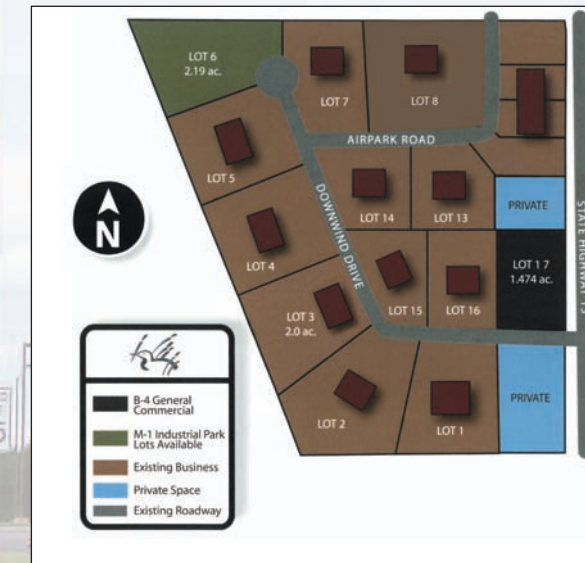


Marshfield Air Business Park

Located on Marshfield's south side, Air Business Park borders State Hwy. 13 and is immediately adjacent to the city's Municipal airport. Just 1/2 mile from US Hwy. 10.

General Information

- 1 site available - 2.19 acres
- \$10,000 per acre (city owned)
- Borders State Hwy. 13
- 26 developable acres (3.76 zoned B-4/ 22.3 zoned M-1)
- Immediately adjacent to airport



Yellowstone Industrial Park

Located on Marshfield's southeast side with the first industrial business coming in 2011.

General Information

- 104 acres
- M-3 General Industrial
- Easy access to U.S. Highway 10
- Rail access

UNDER DEVELOPMENT



BUILD TO SUIT!

Marshfield Area Chamber of Commerce & Industry

assists with build-to-suit projects. We recommend area developers who offer the efficiency, expertise and the quality required to fit the needs of your business.

For more information on the above business/industrial parks and other available buildings and sites, call Scott Larson, Executive Director or Karen Olson, Business Development Director, Marshfield Chamber of Commerce & Industry at 715-384-3454 or visit our website at www.marshfieldchamber.com

Incentives

Revolving Loan Funds:

(Low Interest Loans)

- Marshfield RLF
- Wood County RLF
- Regional RLF
- TIF (Tax Incremental Financing) Financing Incentives

We can help you access other incentives, including state grant, loan and tax credit programs.

Cost of Living



2010 Average
National Index Average - 100

Participating Central WI Cities Index Range:
High: 102.6 Low: 91.7

Marshfield-Micro

All Items Index	95
Housing	91.7
Misc. Goods & Services	93.6
Grocery Items	96.6
Transportation	97.6
Health Care	102.6
Utilities	101.0

Source: American Chamber of Commerce Researchers Association

2010 Consumer Spending

Apparel & Services:	
Total Household	\$12,615,872
Average Spent*	\$1,451.60
Computers & Accessories:	
Total Household	\$1,662,935
Average Spent*	\$191.34
Education:	
Total Household	\$9,733,448
Average Spent*	\$1,119.95
Recreation:	
Total Household	\$517,147
Average Spent*	\$2,820.98
Food at Home:	
Total Household	\$34,374,683
Average Spent*	\$3,955.20
Food Away from Home:	
Total Household	\$24,414,344
Average Spent*	\$2,809.15
Health Care:	
Total Household	\$29,570,526
Average Spent*	\$3,402.43
HH Furnishings & Equip:	
Total Household	\$13,346,132
Average Spent*	\$1,535.63
Investments:	
Total Household	\$12,940,916
Average Spent*	\$1,489.00
Retail Goods:	
Total Household	\$180,260,065
Average Spent*	\$20,741.00
Shelter:	
Total Household	\$115,967,871
Average Spent*	\$13,343.44
TV/Audio/Video:	
Total Household	\$9,522,904
Average Spent*	\$1,095.72
Travel:	
Total Household	\$13,628,227
Average Spent*	\$1,568.09
Vehicle Maint & Repair:	
Total Household	\$7,117,159
Average Spent*	\$818.91

*The average amount spent is per consumer household.
SOURCE: Expenditure data are derived from the Consumer Expenditure Surveys, Bureau of Labor Statistics ESRI.

Labor 2010



Labor Force Data

(Wood County, March 2010)

Labor Force:	40,864
Unemployed:	3,514
Unemployment Rate:	8.6%

Employment by Industry

(Wood County 2010)

Health Care & Social Assistance	12,519
Manufacturing	5,624
Retail Trade	4,434
Transportation and Warehousing	3,700
Accommodation and Food Services	2,256
Construction	1,453
Other Services (Except Public Administration)	1,260
Information	1,157
Wholesale Trade	1,152
Finance and Insurance	885

Labor Unions

AFSCME
Boot & Shoe Workers - Footwear Division UFCW
Central WI River Valley Building & Construction Trades Council
Communication Workers of America
International Association of Firefighters
International Association of Machinists & Aerospace Workers
International Brotherhood of Boilermakers, Iron Ship Builders, Blacksmiths, Forgers, & Helpers
Teamsters Local
United Brotherhood of Carpenters & Joiners of America

Parks & Recreation



The Marshfield area provides numerous recreational opportunities.

Area facilities include:

Auto Race Track:	1	Baseball Fields:	1 with lights, 6 without
Bowling:	24 lanes	Softball Fields:	3 with lights
Indoor Movies:	7	Swimming Pools:	1 outdoor, 2 indoor
Tennis Courts:	24 outdoor, 1 indoor	Horse Shoe Courts:	13
Racquetball Court:	1	YMCA:	1
Golf Course:	3 (2 -18-hole & 1-9-hole)	Parks:	19 City including
Miniature Golf:	2		Wildwood Park
Skating Rinks:	1		and Zoo
Hockey Rinks:	1 indoor, 1 outdoor	County Parks:	5
Disc Golf:	3 courses	Skate Parks:	1
Soccer Fields:	12	Pedestrian/Bike Trails:	over 20 miles
Curling Rink:	1		

Thousands of acres of quality recreational lands for hunting, fishing, camping, cross country skiing and snowmobiling.

Wildwood Park & Zoo, 1800 South Roddis Avenue
Wildwood Zoo is a municipal zoo which was established in 1937.

The park and zoo cover over 100 acres of land and boast a variety of animals and birds from North America. Key exhibits are the grizzly bear, mountain lions, lynx, sandhill cranes and timber wolves. Prairie Dogs spring out of the holes in their exhibit to peek at spectators while the hawks, owls and bald eagle cautiously observe all of the activity. Strolling through the area, you will be able to observe the geese, ducks, swans, muskrats, rabbits, and squirrels, who make themselves at home on the zoo grounds.

The zoo features the Sensory Gardens, which includes a wide variety of flowering and non-flowering plants, designed to encourage the visitor to experience the senses of sight, sound, smell, and touch in a unique and tranquil setting. Also at the zoo is the Native Gardens display. Surrounding the Education Pavilion, the Native Gardens represent the three stages of succession of a Wisconsin forest. A special feature of the zoo is the drive-by viewing option of the large animal exhibits, which include buffalo, elk, white-tail deer, turkey, and the timber wolf exhibit. Walking and bike trails provide another option for enjoying the zoo and surrounding park area. The park includes two large ponds, an accessible fishing pier, an observation tower for viewing the waterfowl, plus picnic shelters, playground area, disc golf course, outdoor swimming pool, historic steam locomotive display and woodlands. Seasonal hours.



Healthcare



Ministry Saint Joseph's Hospital is a 500-plus bed tertiary care teaching institution. One of the largest rural referral medical centers in Wisconsin, and a Level II verified trauma center, it provides health care, including all major medical and surgical specialties and subspecialties, to an ever increasing service area in Wisconsin and Upper Michigan. More than 400 Marshfield Clinic physicians are on its medical staff, with more than 2,100 quality caregivers providing round-the-clock support. Ministry Saint Joseph's Hospital, a member of Ministry Health Care, was founded more than 120 years ago by the Sisters of the Sorrowful Mother. Their mission is to continually improve the health and well being of all people, especially the poor, in the communities it serves.



Ministry Saint Joseph's Children's Hospital joins only three other hospitals in the state with the recognition of a "children's hospital" as designated by the National Association of Children's Hospitals and Related Institutions (NACHRI).

The hospital was also certified as a Primary Stroke Center, for pediatric, adolescent and adult patients, the only one in north central Wisconsin. It is also a Magnet Hospital, signifying excellence in nursing.

The study of quality at the nation's nearly 5,000 nonfederal hospitals places Ministry Saint Joseph's Hospital in the top five percent for overall clinical quality- the fifth year that the hospital has received the award.

Ministry Saint Joseph's Hospital has been recognized for excellence in care in both hip and knee replacement, spine surgery, heart and vascular care, as well as in the medical and surgical management of rare and complex cancers. It was also recently designated as a Center of Excellence for Bariatric Care. Their promise is to earn trust by working together as One Ministry to keep patients first in everything they do.

Major Employers



Name	Product or Service	Employees
Marshfield Clinic	777 physician multi-specialty private clinic (376 physicians based at Marshfield site)	3,977
Ministry Saint Joseph's Hospital	500+ bed acute care Hospital	1,630
Roehl Transport, Inc.	Transportation of general commerce	2,183
Marshfield DoorSystems, Inc.	Wood doors, steam-through door core	542
de Boer, Inc. (Blenker, WI)	Transportation of general commerce	452
Land O' Lakes (Spencer, WI)	Processed cheese	396
A&B Process Systems Corp (Stratford, WI)	Process Flow Systems	308
V&H Heavy Trucks, Inc.	Truck sales & service/Truck leasing	215
Felker Bros. Corp.	Stainless steel fabrication and component fittings	200
Figi's Inc.	Mail-order cheese, sausage & gifts	200+ (plus 3,000 seasonal)
H&S Manufacturing Co., Inc.	Manufacturer of farm equipment	146
Wisconsin Homes	Manufactured Housing	130
Bethel Center	111 bed skilled nursing home	126
Nelson Jameson	Distribution of Equipment & Supplies Dairy & Food Processing Plants	123
Weinbrenner Shoe Co.	Shoes and outdoor leather footwear	120



Marshfield Clinic is a large private group medical practice in Wisconsin and one of the largest in the United States, with 777 physician specialists representing 86 medical specialties; and 6,600 employees at 54 Clinic locations in 39 communities in Wisconsin. Marshfield Clinic was founded in 1916 in Marshfield and its center at 1000 North Oak Ave. in Marshfield is the largest center in the Clinic system. The Clinic system had 3.74 million patient encounters in 2010.

The Clinic system also includes Marshfield Clinic Research Foundation, the largest private medical research institute in Wisconsin; Marshfield Clinic Division of Education for graduate and continuing medical education; Security Health Plan of Wisconsin, Inc., a health maintenance organization; Marshfield Laboratories for diagnostic human testing, forensic toxicology and veterinary medicine; and Lakeview Medical Center, a 40-bed hospital in Rice Lake.

Marshfield Clinic Research Foundation (MCRF) is the Research Division of Marshfield Clinic. MCRF was founded in 1959 to discover and communicate scientific knowledge that substantially improves human health and well-being. MCRF consists of research centers in clinical research, rural health and safety, epidemiology, human genetics and biomedical informatics. It also provides a range of support services for physician and scientist investigators, including biostatistics, protocol and grant preparation, research publication and core laboratory support. MCRF is the largest private medical research institute in Wisconsin, with a staff of more than 200, including 30 PhD and M.D. scientists. In addition, approximately 150 physicians and other healthcare professionals throughout the Marshfield Clinic system are engaged in medical research. Approximately 400 clinical trials and other research projects are active at any time.

Marshfield Labs is one of the largest, full-service private practice laboratory systems in the nation, reporting about 25 million tests annually. Marshfield Labs is unique because it is a reference lab for both human testing and veterinary testing, with additional service lines for pain management and forensic urine testing. Marshfield Labs has a strong commitment to providing quality education and is one of the few laboratories in the country to hold simultaneous national accreditation for Histotechnician (associate's degree), Cytotechnologist (bachelor's degree) and Clinical Lab Scientist (bachelor's degree) programs. Marshfield Labs is affiliated with accredited colleges and universities to provide practical training to students for Phlebotomy Technician (diploma), Clinical Lab Technician (associate's degree), Clinical Microbiologist (master's degree) and Pathologist Assistant (master's degree).

Security Health Plan (www.securityhealth.org) is a physician-led health maintenance organization, sponsored by Marshfield Clinic. Security Health Plan serves more than 199,000 residents in a 32-county service area of Wisconsin. Founded in 1971 as the Greater Marshfield Community Health Plan, Security Health Plan has grown to become the fourth largest HMO in Wisconsin. Accredited by the National Committee for Quality Assurance (NCQA), Security Health Plan provides fully-insured and self-funded plans to a variety of large and small employers, as well as to individuals and families.

**U.S. News/NCQA America's Best Health Insurance Plans 2009-2010. "America's Best Health Insurance Plans" is a trademark of U.S. News & World Report.



The School District of Marshfield, a unified school district serves approximately 4,042 students. It employs 280 teachers and 154 support personnel. The Early Childhood/Kindergarten through twelfth grade (including a popular and successful 4-year old kindergarten program) structure involves four elementary schools within the city limits, one rural school, one middle school for grades seven and eight, and one high school for grades nine through twelve. The high school offers students the opportunity to participate in up to 27 different advanced placement classes to receive college credit. Over 76% of the 2010 graduating class continued with post secondary education.

The Columbus Catholic School System, serving students at St. John the Baptist Primary School, Our Lady of Peace Intermediate School, Columbus Catholic Middle School, and Columbus Catholic High School, provides affordable, high-quality, Catholic education to the greater Marsh-

field area. In cooperation with the Diocese of La Crosse and sponsoring parishes, the Columbus Catholic Schools provide an outstanding program of studies, including half or full-day preschool, and the only full-day, academically-based 4-year-old Kindergarten in the city. The schools' nurturing environment promotes Christian character and values, anchored in the Catholic faith. The schools offer foreign language and technology instruction in grades 1-12. Advanced placement courses, and courses for college credit are available at the high school level. The schools have standardized testing scores well-above the state and national averages. Columbus Catholic High School has a 100% graduation rate and averages over 95% of its graduates going on to post-secondary education. ACT scores at Columbus Catholic High School are consistently the highest in the Marshfield area. The Columbus Catholic Schools employ a staff of over 100 to serve nearly 600 students of all faiths and backgrounds from throughout the Marshfield area.



Mid-State Technical College — The MSTC Difference

Mid-State Technical College (MSTC) has assumed a vital leadership role in the development of the central Wisconsin workforce and economy. As one of 16 publicly supported colleges in the Wisconsin Technical College System, MSTC provides a dynamic learning environment that assists area residents in achieving their personal and career goals.

Additionally, MSTC's Marshfield Campus offers apprenticeship opportunities as well as adult and continuing education courses and seminars, career awareness workshops, academic support services, incumbent worker training, and customized training for business and industry.

Through credit, non-credit, and skill enhancement courses, MSTC has emerged as a driving force behind post-secondary education in central Wisconsin. Enrollment at the Marshfield campus for 2009-10 was approximately 3000 students seeking upgraded skills by taking one course or by enrolling in a career program.

The Marshfield Public Library —

Located at 211 E. Second Street, Marshfield Public Library has been serving the community's ever changing needs for over 110 years. Over 224,000 people of all ages visit the library each year to quench their thirst for knowledge, ideas and culture. With over 156,000 items, the library has something for everyone - books, DVDs, videos, CD-ROMs, recorded books and music, magazines and newspapers, and equipment. Specialized large print, extensive genealogy, equipment for those with special needs, and Spanish language materials are available to all visitors. For the library's registered borrowers, there is Internet access and the Microsoft Office Suite, along with numerous online resources

(many that are also available from home with your card). Friendly, knowledgeable staff provide reference and information service in person, or over the phone (387-8494 Ext. 220), by FAX (387-6909), via email (refdesk@marshfieldlibrary.org) or through Ask?Away!, our 24/7 virtual reference service. As a member of the South Central Library System, Marshfield Public Library is well connected to the state and the world with regard to interlibrary loan and delivery service. Visit the Library and the catalog in person or through the web at www.MarshfieldLibrary.org



The University of Wisconsin —

UW-Marshfield/Wood County blends technology and art to provide a well-rounded, liberal arts education. The campus features an art gallery, distance-education classrooms, an arena-style Black Box Theatre, the 340-seat Helen Laird Theatre, enhanced space for drama, art and music, a full-size gymnasium, computer labs, the Hamilton Roddis Memorial Library, cafeteria, lounge and fitness center. Outdoor recreational facilities include lighted tennis courts, soccer and football fields, a baseball diamond and a 109.3 acre arboretum with nature trails.

To meet the needs of life-long learners, the campus collaborates with business, industry, K-12 school districts, technical schools and non-profit agencies, increasing access to higher education. UW-M/WC awards an Associate of Arts and Science degree (60 credits). A guaranteed transfer program assures graduates that all of their general education credits will be accepted by any UW System institution. Students can earn three bachelor's degrees on the UW-M/WC campus through collaborations with UW-Eau Claire (nursing), UW-Platteville (engineering) and UW-Stevens Point (American Studies). The FastTrack degree, a hybrid program that combines both classroom and online instruction, is designed primarily for the convenience of the working adult. Students take one class at a time, one night per week for seven weeks.

Visit us at www.marshfield.uwc.edu.



Marshfield Area Chamber of Commerce & Industry

700 South Central Avenue
P.O. Box 868
Marshfield, WI 54449
Phone (715) 384-3454
FAX (715) 387-8925
info@marshfieldchamber.com

webpage: www.marshfieldchamber.com