

PERSPECTIVES

MARSHFIELD CHAMBER OF COMMERCE & INDUSTRY /// NEWSLETTER DECEMBER 2021

JOIN US AT OUR ANNUAL MEETING WEDNESDAY, JANUARY 26TH

Come and celebrate our community's accomplishments!

After a delicious dinner, we will announce the 2022 Firm of the Year, Small Business of the Year, Leadership Marshfield Alumnus of the Year and the MACCI Service Award. Don't miss the announcing of the award recipients!

Eagle's Club of Marshfield

5:00 – 8:30 PM

<u>Event Item</u>	<u>Amount</u>
Presenting Sponsorship <i>includes 8 tickets</i>	\$1,000
Corporate Sponsorship <i>includes 4 tickets</i>	\$750
Centerpiece Sponsorship	\$100
Annual Meeting Dinner (Before January 23)	\$45
Annual Meeting Dinner (After January 23)	\$50

[Registration is now open online](#) or call our office at 715-384-3454.



2021 Recipients

INSIDE...

- Business Bowl
- Leadership Marshfield
- Crystal Apple Update
- Central Wisconsin Days
- & more upcoming events!



MACCI

Scott Larson - President

Krystal Bowman

Director of Programs & Engagement

Karen Isaacson

Talent & Member Relations Director

Jessical Roehl

Administrative Assistant

CHAMBER FOUNDATION

Karen Olson

Business Development Director

VISIT MARSHFIELD

Matt McLean - Executive Director

Nicole Claude - Marketing Associate

BOARD OF DIRECTORS:

Ron Wilczek - Chairperson

Shaun Quinlan - Vice Chair

Mark Vieth - Secretary

Matt Eckelberg - Finance Chairperson

Rita Blenker • Chad Curtis • Marty Chy

John Franseen • Keith Le Moine

Josh Meissner • Nick Kumm • Mandy Witt

CHAMBER EVENTS

BUSINESS BOWL, JANUARY 13, 2022



MACCI's Business Bowl is back and scheduled for Thursday, January 13, 2022. We are inviting you to participate in this fun team building event! Network with fellow peers and invite your business partners as we host "Denim & Diamonds Business Bowl 2022." This is a great opportunity to step away from the office and our day-to-day routines to have some fun. Let's put on our blue jeans (add some bling) and get out of the January Blues!

[Team Registration](#) is \$150 and includes: 5 bowlers, 2 games, 1 drink ticket, and 1 raffle ticket for Business After 5 immediately following the event.

We cannot do this event without your support! Below are ways you can help and chose the best exposure for your business. Thank you for your consideration. For more information contact Krystal Bowman, bowman.krystal@marshfieldchamber.com.

KING PIN SPONSOR \$500

- Business Logo prominently displayed on
 - Bowler registration (print and electronic)
 - Bowler Drink Ticket
 - Poster at registration
 - December & January Newsletter
 - Facebook Page
- Lane Signs
- Opportunity to address participants prior to bowling
- Opportunity to have a table or give promotional items to bowlers at event
- **Includes registration for team (5 bowlers)**

STRIKE SPONSOR \$250

- Business Logo displayed in
 - January Newsletter
 - Facebook Page
- Lane Signs
- Recognized as a snack sponsor

DIAMOND SPONSOR 2 LANES FOR \$100 OR \$60 EACH

- Business Logo displayed in
 - January Newsletter
 - Facebook Page
- Lane Signs

BLING SPONSOR

Prizes and awards will be given out throughout the event, as well as the opportunity to win raffle baskets! If you or your business would like to **donate a basket** or **contribute a monetary gift** towards these items, it would be greatly appreciated.

Your business will be recognized at the prize tables.

CHAMBER EVENTS

UPCOMING CALENDAR EVENTS:

- January 13:** Business Bowl at Rose Bowl Lanes
- January 13:**  at Rose Bowl Lanes
- January 26:** Annual Meeting at the Eagles of Marshfield
- February 18:** Whiskey & Wine Fest at Hotel Marshfield

For a complete listing of events and to find more details on the above, check out the MACCI website at www.marshfieldchamber.com. You can also view additional community events at www.visitmarshfield.com.

WHISKEY & WINE FEST, FEBRUARY 18TH



NEW! Join us on Friday, February 18, 2022 for a fun social event at Hotel Marshfield - you pick if you want to sample whiskey or wine! Joe G. will be performing and there will be a wide array of pairings and appetizers available.

Tickets will be \$35 in advance (must purchase by February 17).

Gather your colleagues, network, and support member businesses. If you are interested in becoming an **Event Sponsor**, you will be recognized on printed promotional material, and your logo will be displayed near the registration table, photobooth and musical performer.

As an **Hors'doeuvres Sponsor** you will receive all promotion listed above, name listed in the February Newsletter, and be 1 of 5 logos displayed at the pairing tables.

You can [register online](#) or contact Krystal Bowman, bowman.krystal@marshfieldchamber.com.

CHAMBER NEWS

BEVY BEAUTY RIBBON CUTTING



MACCI had the pleasure of hosting a Ribbon Cutting ceremony for the new Bevy Beauty located at 109 W. 5th Street, Marshfield on Friday, December, 10, 2021.

Alexis Free (owner) and Victoria Kneiss are so excited to announce the opening of their business and to be able share it with the Marshfield community!

Bevy Beauty Co. offers waxing/sugaring, facials, and lash services. At Bevy, they strive to create a space where people can feel empowered, comfortable, and listened to. Through education and experience, they provide clients with the ability walk out post service feeling carefree and confident.

Stop in and shop or schedule an appointment today. You can follow them on [Facebook here](#).

CHRISTMAS BUSINESS AFTER 5

Thank you to everyone who came to Business After 5 at Hotel Marshfield. The staff at Hotel Marshfield did a wonderful job hosting and decorating the ballroom like a Gingerbread, Winter Wonderland!



Event Sponsors:

MACCI Ambassadors
Associated Bank
Automated Products Inc.
Badger Title
Dental Clinic of Marshfield

Festival Foods
Forward Bank
Furniture & ApplianceMart
Hawkins Ash CPAs
Hotel Marshfield

Marco
Marshfield Utilities
Marshfield Insurance
McMillan Warner Mutual
Insurance

Roehl Transport Inc
Simplicity Credit Union
Nasonville Dairy
Wenzel Farms

LEADERSHIP MARSHFIELD, PUBLIC SAFETY DAY



On Thursday, December 16, 2021 the 2022 Leadership Marshfield class learned all about public safety from the staff at the Marshfield Fire and Rescue Department and Marshfield Police Department. The objective of the program day was to acquaint the class participants with the following:

- Familiarize oneself with the Marshfield Fire & Rescue Department – the many jobs you know are fire-related and many other jobs that you may not know about.
- Receive a taste of handling an EMS call, a Hazardous Materials Incident and the fun of actually handling a fire hose. These are just a few of the many types of incidents handled by Marshfield Fire & Rescue.
- Q&A with the Fire Chief and Deputy Chiefs
- Familiarize oneself with the Marshfield Police Department. Q&A with the Acting Police Chief and Lieutenants
- The jobs they perform and the specialty positions (Special Response Team – includes the ARV: Armored Rescue Vehicle).
- Understand a few of the tools and means by which the Investigator attempts to bring the investigation to a positive end. Try solving a crime!

Thank you to our presenters and trainers for sharing your knowledge and keeping our community safe! Also, thanks to KamBray's Mobile Restaurant & Catering for catering our lunch -- delicious!

2022 CRYSTAL APPLE AWARDS PROGRAM HAS RECORD NOMINATIONS!

The Crystal Apple Awards program promotes community awareness of the quality of education in the Central Wisconsin area and showcases exceptional teaching talent. This year's nomination process kicked off on December 6th and area educators received a special appreciation gift sponsored by Marshfield Clinic Health System. Educators with one or more years of teaching experience currently working at a school in Auburndale, Columbus Catholic schools, Granton, Greenwood, Immanuel Lutheran, Marshfield, Neillsville, Pittsville, Spencer, and St. Joseph-Stratford were eligible for this prestigious honorary program. The nomination process concluded on December 20th and this year, we received over 1500 nominations recognizing 407 area educators from the aforementioned area school districts.

We appreciate and thank everyone that took time to submit a nomination for our area educators. This was a record year of nominations received! Watch for an announcement soon through our digital communications and the Hub City Times on those nominated and eligible for the Teacher of Distinction and in the running for the highest honor, the Crystal Apple Award. The Teachers of Distinction will be announced mid-January, 2022.

The Crystal Apple Awards program is funded through the Marshfield Area Chamber Foundation which coordinates Partners in Educational Excellence and Workforce Development. The partnership consists of Central Wisconsin businesses and public and private school districts.

COMMUNITY NEWS

FOUR-PART SERIES OFFERED TO HELP EDUCATORS, CAREGIVERS DEAL WITH COMPASSION FATIGUE AND BURNOUT



Compassion fatigue and burnout is sweeping the nation and none of us are immune. That is why it is important to identify the signs of stress and burnout and learn tools and strategies to increase resilience.

Marshfield Clinic Health System

Marshfield Clinic Health System Psychiatry & Behavioral Health and Center for Community Health Advancement departments in partnership with the Wisconsin Department of Administration

Beyond the Classroom Grant Program are offering a four-part mental health Learning Series to help educators, caregivers and adults who work with children and youth.

This learning series provides an overview of compassion fatigue and burnout experienced by adults as they support children and adolescents through the pandemic. The series will highlight how daily work stress is affecting educator and caregiver mental health and well-being. The presentations will define compassion fatigue and burnout, identify early signs of burnout, become aware of risk factors and protective factors, and discuss realistic action steps towards building compassion resilience.

“We need to address the added stress that the COVID-19 pandemic has created for all of us for nearly two years,” said Dr. Jennifer Michels, clinical psychologist, at Marshfield Clinic Health System. “This series will help participants learn how to identify signs of burnout and implement accessible self-care strategies in their daily work to facilitate improved personal and team well-being.”

Visit www.wiafterschoolnetwork.org to select the “Learning Series” tab to learn more and register. The schedule for the series:

Jan. 7 – Stress and Anxiety Management: Strategies that Work, 11 a.m. to noon via WebEx, presented by Kelly Spanier, Psy.D., Psychology Postdoctoral Fellow, and Kelsie Offenwanger, Psy.D., Child/Adolescent Psychologist.

Jan. 21 – Personal Resilience and Well-Being: Fostering Growth Through the Pandemic, 11 a.m. to noon via WebEx, presented by Kelsie Offenwanger, Psy.D., Child/Adolescent Psychologist, Marshfield Clinic Health System.

UW-STEVENSONS POINT COMMUNITY TESTING RESUMES JAN. 3

Community COVID-19 testing at the University of Wisconsin-Stevens Point will resume Monday, Jan. 3, 2022, as part of the university's ongoing efforts to protect the community, students and employees during the outbreak of the fast-spreading Omicron variant.

Appointments are required for these free rapid-results antigen tests at www.wihealthconnect.com. Testing will be offered at the following UW-Stevens Point locations:

- Stevens Point – Mondays and Thursdays, 8 a.m.-6 p.m.; Tuesdays, Wednesdays and Fridays, 8 a.m. to 4 p.m., Science Building, Room C124, 2001 Fourth Ave.
- Marshfield – Mondays, 8 a.m. to 4 p.m., physical education building, 2000 W. 5th St.
- Wausau – Thursdays, time and location to be determined.
- Allow 20-25 minutes for the test and results. The results will be available on site and by logging into the registration website.

Face coverings continue to be required in all UW-Stevens Point facilities. Wear a covering before entering a testing location.

For questions, please contact the COVID-19 Hotline at covid@uwsp.edu or 715-346-2619. For parking details or more information, see the COVID [testing](#) website.



A snow covered UWSP Campus

COMMUNITY NEWS

YOUR FEEDBACK IS NEEDED ON A U.S. CHAMBER FOUNDATION INITIATIVE



As a valued partner of the U.S. Chamber of Commerce Foundation, we would like your feedback to help improve the quality of services provided through the Talent Pipeline Management (TPM) portfolio. We would like to invite you to take part in an online survey conducted by Opinium Research on behalf of the U.S. Chamber Foundation.



This survey should take you approximately 20 minutes to complete depending upon your internet connection and will remain open no later than January 7, 2022. It may close earlier if we receive our target number of completed surveys.

As a thank you for taking part in the research, you will be entered into a prize drawing for the chance to win either a \$300, \$200 or \$100 Amazon Voucher. Winners will be selected at random and will be contacted within 30 days of the drawing.

[Take the survey.](#)

CONNECT WITH BUSINESS OPPORTUNITIES IN CANADA



WEDC Global Trade Venture
Canada: Toronto and Montreal
March 20-25, 2022

The image shows a promotional banner for a trade venture. It features a cityscape of Toronto with the CN Tower. Text is overlaid on the image. In the bottom right corner, there is a small logo for "Precision Business Prospecting" and "SBA".

Canada is the largest export market for U.S.-produced goods (\$310 billion in 2020), as well as for goods produced in Wisconsin (\$6.2 billion in 2020). With trade between the U.S. and Canada already strong—the two countries share the world’s longest international border, and \$1.7 billion of goods and services cross that border each day—Canada is a natural first step for Wisconsin producers of goods and services who are looking to begin exporting.

A MATURE AND SOPHISTICATED MARKET

From March 20-25, 2022, WEDC will be leading a global trade venture to Canada, with segments in Toronto and Montreal. Wisconsin companies, whether new to exporting or looking to expand their exports into Canada, are invited to participate in this program. In each city, participants will be scheduled for customized one-on-one meetings with prospective partners in the market. These partners are vetted for each participating company based on specific qualifications and criteria that suit the company’s needs. Each participant in the Global Trade Venture will also receive market intelligence specific to his or her company, detailing considerations to keep in mind when introducing the company’s product or service into the Canadian market. With logistics and scheduling handled for them, participating companies can focus on business. [Learn More.](#)



HEALTH IN MOTION

(715) 898-1600 HIMWI.com

204 N. Central Ave.
Marshfield, WI 54449

Keeping YOU Moving!

Click ad above to learn how Health in Motion can help you!

MORE INSIDE THIS ISSUE...

CENTRAL WISCONSIN DAYS, FEBRUARY 9

VISIT MARSHFIELD UPDATE

UWSP CONTINUING EDUCATION

TRAVEL OPPORTUNITY, EGYPT



CENTERGY

*Centergy would like to formally
invite you to an exclusive*

C-Suite Reception

Tuesday, February 8th, 2022 | 5-7 PM

The AC Hotel, 9th Floor Terrace

1 North Webster Street, Madison, WI

Central Wisconsin Days is back in Madison, and so is our exclusive C-suite Reception!

Mark your calendar - Formal invitation to follow.

Stay overnight and participate in the 17th Annual Central Wisconsin Days on Feb. 9, 2021.

See attachment & register today to get the Early Bird rate.

Key issue for legislative discussion is Talent/Workforce Retention & Recruitment



Presented By:



RSVP by February 4th, 2022

JOIN US FOR
2022 CENTRAL WISCONSIN DAYS
IN-PERSON AT THE CAPITAL



Wednesday, February 9, 2022 | 10 AM
Madison Concourse Hotel

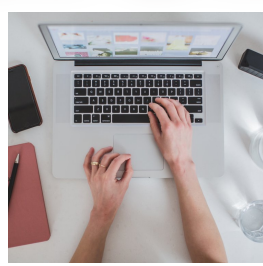
TALENT RETENTION & ATTRACTION



HOUSING



CHILD CARE



BROADBAND



WORKFORCE

WHY YOUR VOICE NEEDS TO BE HEARD

Central Wisconsin Days is an opportunity for business and community leaders to bring the voice of our region to Madison. Meet with policymakers from across the state and discuss how the legislature can help move Central Wisconsin forward. This year's top issue is **Talent** – Retention, Attraction, Development. We'll also delve into issues that support a robust workforce: Housing, Child Care, Broadband.

Register now to take advantage of the reduced rate!

CURRENT SPONSORS

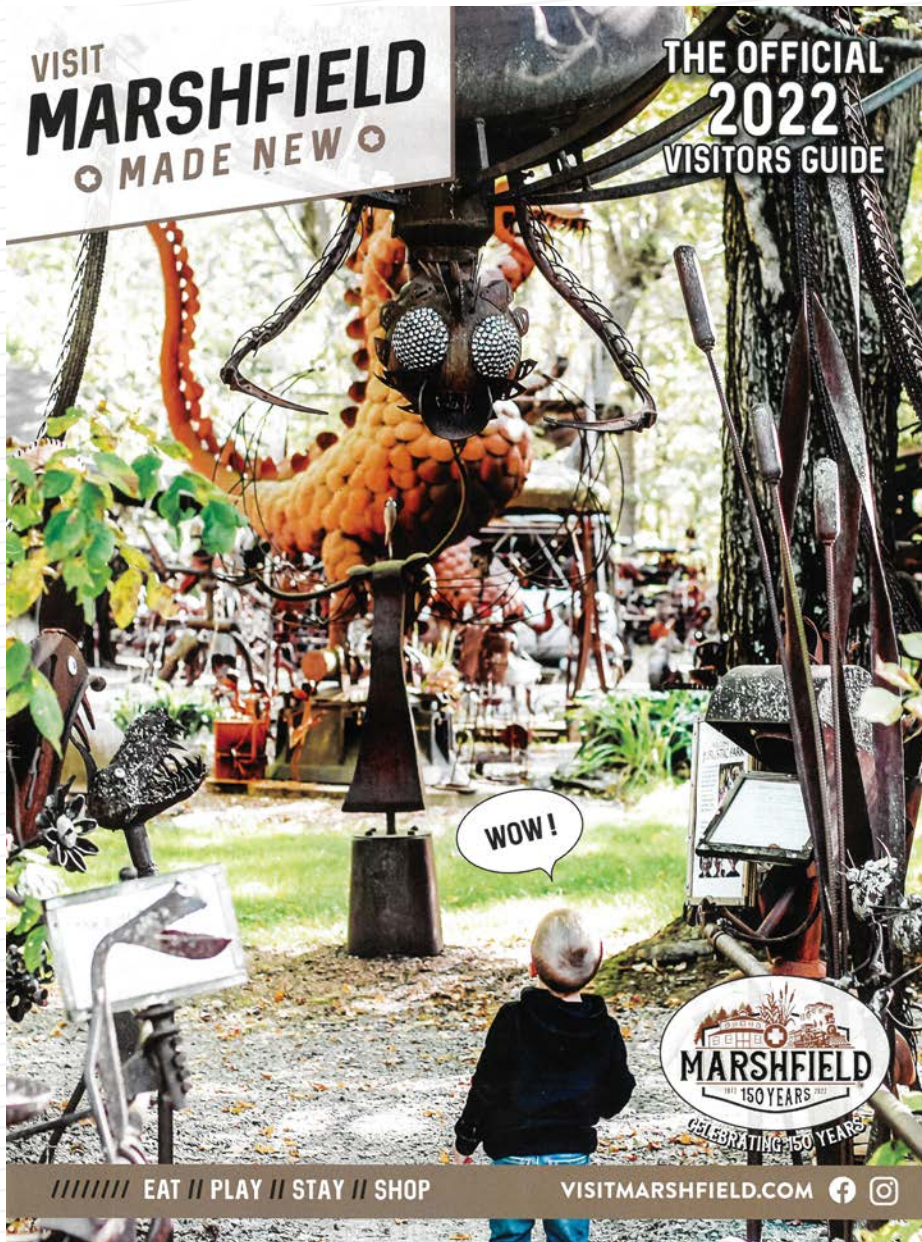


Heart of Wisconsin Chamber of Commerce
Adams County Economic Development Corporation
Marshfield Chamber of Commerce & Industry



MARSHFIELD MADE NEW

JANUARY NEWSLETTER



In these pages, you'll find:

- Re-New-AI : Brief history of Marshfield & landmarks then and now
- Top 10 Things to See & Do in Marshfield
- Outdoor Recreation Hot Spots, Marshfield Bikeshare & ATV/UTV Maps
- Spotlight features on local adventures and cuisine
- Helpful attraction, dining, shopping, lodging & meeting/conference listings

Find it locally, at MACCI and online at visitmarshfield.com/visitor-guide

VISITMARSHFIELD.COM/EVENTS - 2022 EVENT INFO

Marshfield has a lot to celebrate this year - it's our 150th Anniversary!

To keep up to date on the latest and greatest events happening here, go online to visitmarshfield.com/events - we've got you covered.

GATHER AROUND THE FIREPLACE

Buck-A-Neer Supper Club
122923 Cty. Rd. C, Stratford
715-384-2629

Banish the winter blahs with a night out with your crew at Buck-A-Neer Supper Club. Here you'll find great cocktails and warm drinks, too. Enjoy fantastic Old Fashioneds, prime rib, seafood, buffet, chef specials, large salad bar, and more! Make a New Year's resolution to start your supper club tradition today.



Libby McNeill's at Hotel Marshfield
2700 S. Central Ave., Marshfield
715-387-2700

Warm fireplace? Check. Cozy seating? Check. Full bar and creative menu? Check. With live music every Wed. from 5pm-9pm, Libby's is a great place to kick back, enjoy the vibe, and make the best of chilly, wintry nights.

VISIT
MARSHFIELD
MADE NEW

MARSHFIELD CONVENTION & VISITORS BUREAU
IS NOW: VISIT MARSHFIELD

////////

VISITMARSHFIELD.COM  

700 S. Central Avenue, Marshfield, WI 54449
715-384-4314 • info@visitmarshfield.com



Continuing Education University of Wisconsin-Stevens Point



Continuing Education
University of Wisconsin-Stevens Point

Winter/Spring Catalog 2022



**DISCOVER
YOUR PURPOSE**



University of Wisconsin
Stevens Point

STEVENS POINT • MARSHFIELD • WAUSAU

View our Spring 2022 Catalog!

- New Hybrid Classes!
- Travel
- Fine Arts
- Youth
- Professional Development

Upcoming Musical

Having a baby is just the beginning...motherhood is for life. In the original play *Motherhood The Musical*, four women share their insights, challenges and pleasures at a baby shower. In 90 minutes of fun, you'll get a peek into the powerful friendship of Amy, a soon-to-be first-time mom; Brooke, a hard-working lawyer; Barb, a stressed-out mother of five; and Tina, a single mom seeking to balance work, her family and her divorce. *Motherhood* is a funny, yet loving look at being a mom at any age. It's climbing the emotional mountain only to find that there's laundry at the top.

Purchase Tickets

UW-Stevens Point at Marshfield presents

MOTHERHOOD

THE MUSICAL

By Sue Fabisch
Directed by Donna Thompson

7:30 p.m. February 4-5
2 p.m. February 6

Sponsored by the University Foundation
and the Laird Fund for the Arts
Produced by special arrangement with Broadway Licensing.
(www.broadwaylicensing.com)

Marshfield
UW-Stevens Point

Continuing Education | uwsp.edu/conted | 715-346-3838



Explore Magical Egypt

with Marshfield Area Chamber of Commerce



9 DAY TOUR | October 4, 2022

MINNEAPOLIS | CAIRO | LUXOR | KOM OMBO | EDFU | ESNA | ASWAN | CAIRO | MINNEAPOLIS

Price per person on double occupancy:

\$ 3319

Single Person Supplement:

\$ 649

TOUR HIGHLIGHTS:

- See the Great Pyramids and the Sphinx, one of the Seven Wonders of the Ancient World
- Spend 4 nights cruising along the picturesque and historic Nile River
- Visit the legendary Valley of the Kings, home of the tomb of King Tutankhamen
- Explore the High Dam and the Temple of Philae in Aswan
- Visit the Egyptian Museum
- Explore Citadel and the Khan Khalili Bazar on final day of the tour



Group lead by
Scott Larson
President



Marshfield Area Chamber of Commerce & Industry

To book or inquire please contact: Krystal Bowman
T: 715-384-3454 | E: bowman.krystal@marshfieldchamber.com
Or book directly using the online link at the Chamber's website

This magical 9-day tour will guide you through the ancient temples and World Wonders of Egypt. Begin your journey in Cairo, the cultural hub of the Arab World. Take a flight to Luxor and embark on a relaxing four-night cruise up the Nile River. You will discover the ancient temples of Luxor and Karnak, the oldest temple compound in the world. Uncover the fascinating historical sights of Kom Ombo, including the tombs of Theban rulers, ancient kings, and queens of several dynasties. Continue your journey to The Temple of Edfu - the best-preserved ancient temple in Egypt and the second largest. Travel to Aswan and admire the Phile Temple, built to worship the Goddess Isis. Your last stop is Cairo, where you will admire the magnificence of the Great Pyramids of Egypt and Sphinx, the Egyptian Museum, Citadel and Khan Khalili Bazar.

TOUR LODGING INFO:

7 Nights' accommodation on double occupancy basis
+ 1 Night Onboard Flight

CITIES	NIGHTS	DELUXE HOTELS / CRUISE
Cairo	1 Night	Steigenberger Hotel
Luxor - Aswan Cruise	4 Nights	Amwaj Livingstone Nile Cruise
Cairo	2 Nights	Steigenberger Hotel

Hotel / cruise may be replaced with similar deluxe property for operational reasons

INCLUDES:

- International roundtrip airfare from Minneapolis
- Domestic airfares: Cairo to Luxor and Aswan to Cairo
- Accommodation on double occupancy basis at listed or similar hotel / cruise
- Daily Buffet Breakfast
- Full board during your four-night Nile River Cruise (drinks not included)
- Tours from the cruise ship
- Meet & greet at Cairo International airport by our Representative
- Arrival & Departure transfers
- Transportation in a private airconditioned chauffeur driven vehicle
- Sightseeing & Entrance fees as per the itinerary
- Service of English-speaking local guide during sightseeing tours
- All Air taxes and fuel surcharges
- All local applicable taxes

TOUR ITINERARY:

DAY 1: TUE MINNEAPOLIS – CAIRO

Please arrive in time at Minneapolis airport to check-in and board your flight(s) to Cairo, Egypt. Enjoy in-flight meals and services.

DAY 2: WED CAIRO ARRIVAL

Welcome to Cairo! Cairo, called Al-Qahirah in Arabic, with a population of 17 million, is not only Africa's largest city but the political and cultural center of the Arab World. Cairo's old quarters retain their ancient charm with many streets still known by descriptions given to them by medieval chroniclers. Modern Cairo's architecture is distinguished by Ottoman and later European influences, especially in commercial architecture, particularly as the city's population boomed during the 19th century. On arrival at Cairo International Airport you will be met and transferred to your hotel for check in. Overnight in Cairo

DAY 3: THU CAIRO – LUXOR (B/L/D)

This morning we are transferred back to Cairo International Airport for a flight to Luxor. Upon arrival in Luxor, we will be escorted to our cruise ship for our embarkation. This will be our home for the next four nights. Lunch on board and in the afternoon, we will visit Luxor and Karnak Temples. Luxor Temple was the center of the most important festival, the festival of Opet. Built largely by Amenhotep III and Ramses II, the temple served as a setting for the rituals of the festival, which was held to reconcile the human aspect of the ruler with his divine office. The procession of images of the current royal family began at Karnak and ended at the Luxor temple. Karnak Temple was erected in 1928 BC as a small shrine dedicated to Amun, God of Thebes. The Temple of Karnak comprises three main temples, smaller enclosed temples, and several outer temples - all constructed over 1300 years. The three main temples





of Mut, Monthu and Amun, are enclosed in enormous brick walls, with the temple of Amun at the center. Karnak is now the largest and oldest temple compound on earth. Dinner and overnight on board in Luxor.

DAY 4: FRI LUXOR – EDFU (B/L/D)

After breakfast, cross the newly constructed Luxor Bridge to visit the Valley of the Kings, which includes the tombs of the Theban rulers, Seti I and Tutankhamen. The Valley of the Kings in Upper Egypt is home to many pharaonic tombs of the New Kingdom, including those of King Tutankhamun and Ramses the Great. Each king's formal name and title is inscribed in his tomb, which are also adorned with his images and statues. Most of the tombs were cut into limestone following a similar pattern: three corridors, an antechamber, and a sunken sarcophagus chamber. Explore several amazing Royal Tombs. Then visit the Valley of the Queens which includes between 75 and 80 tombs. These tombs belong to queens of the 18th, 19th and 20th Dynasties. Among these is the famous tomb of Nefertiti, one of the five wives of Ramses II. Afterwards tour the mortuary Temple of Hatshepsut, the only woman Pharaoh to rule ancient Egypt. The mortuary temple of Queen Hatshepsut of the 18th dynasty was built just north of the Middle Kingdom temple of Mentuhotep Nebhepetre, amid the bay of cliffs known as Deir El-Bahri. In ancient times the temple was called Djoser-djeseru, meaning the sacred of sacreds. The female pharaoh chose to build her temple in a valley sacred to the Theban Goddess of the west, on a direct axis with Karnak Temple of Amun on the East Bank. After lunch on board we sail to Edfu via Esna. Ancient Nubia was known to the pharaohs as the "Land of Gold," and its wealth and lands were eventually incorporated into Egypt around 1500 BC. This afternoon, join your shipmates for afternoon tea. Dinner and overnight on board in Edfu

Optional: Hot air ballooning over the valley at sunrise - \$150

Enjoy the splendours of the ancient historical sights of Luxor from the air. See this spectacular landscape from the unique viewpoint that only hot air ballooning can provide. Glide majestically over the temples and burial grounds of the Pharaohs and allow history to come to life before your eyes.

DAY 5: SAT LUXOR – EDFU – KOM OMBO – ASWAN (B/L/D)

Enjoy breakfast on board before visiting the Temple of Edfu. This temple is not only the best-preserved ancient temple in Egypt, but also the second largest after Karnak. It was believed that the temple was built on the site of the great battle between Horus and Seth. Hence, the current temple was but the last in a long series of temples build on this location.

We then sail to Kom Ombo and have lunch and afternoon tea on board the ship. This afternoon, disembark and enjoy a short walk to the Temples of Kom Ombo. This temple complex actually consists of two temples: the Temple of Sobek and the Temple of Haroeris. In ancient times, sacred crocodiles basked in the sun on the riverbank near here. The Temple has scant remains, due first to the changing Nile, then the Copts who once used it as a church, and finally by builders who used the stones for new buildings. As we sail toward Ancient Nubia, participate in an Egyptian Galabeya Party. Overnight on board in Aswan

DAY 6: SUN ASWAN (B/L/D)

After breakfast, visit the High Dam and the Temple of Philae. South of here lies the flooded lands of Nubia, Sudan, and Ethiopia. Just north of the border between Egypt and Sudan lies Aswan High Dam, a huge rock-filled dam which captures the world's longest river, the Nile, in the world's largest artificial reservoir, Lake Nasser. The dam, known as "Sadd El-Aali" in Arabic, was completed in 1970 after 10 years of work. Then, on to the granite quarries, which supplied the ancient Egyptians with most of the hard stone used in their pyramids and temples, and see the famed Unfinished Obelisk, located in the Northern Quarry, still lies where a crack was discovered as it was being hewn from the rock. This obelisk would have been the largest ever erected if it hadn't cracked before it was fully quarried. Tools left by its builders have given archaeologists much insight into how such work was performed. Invoke the healing powers of the goddess Isis with a visit to the Temple of Philae and the delightful Temple of Isis. Enjoy a short trip on a motorboat to Philae Temple, which will bring you to a magnificent vista of the island of Agilika before landing at what would have been the ancient quay on the south side. The temple was dedicated to the goddess Isis and has many legends connected to it. The most well-known legend tells the story of how Isis found the heart of Osiris here after his murder by his brother Seth. Return to the ship for lunch before boarding a traditional felucca to enjoy a sail around Kitchener's Island along with a visit to the botanical gardens, 6.8 hectares teeming with a variety of birds, flora and palm trees. Have dinner back on board the cruise ship and relax as you watch the evening's Nubian entertainment show. Overnight onboard in Aswan

DAY 7, MON: ASWAN – CAIRO (DISEMBARKATION) (B/-/-)

Disembark the cruise after breakfast. From there you will be transferred to Aswan Airport for your flight back to Cairo.

Depending on arrival time you will go to hotel check-in & then leave immediately OR go straight from the airport to visit the Egyptian

Museum. Experience the most important depository of Egyptian antiquities anywhere in the world. The current Egyptian Museum boasts 107 halls filled with approximately 160,000 objects covering 5,000 years of Egypt's past. It features artifacts from the Pharaonic and Graeco-Roman periods, including the celebrated mummies of ancient Egypt's king and Tut Ankh Amun treasures. A brand new Grand Egyptian Museum is scheduled to open by end of 2021. When commissioned, it will be the largest museum on planet earth close to Pyramid's area and will have many additional artifact & historical monuments returned by European nations.

Enjoy the remainder of the day at leisure.
Overnight in Cairo

DAY 8, TUE: CAIRO (B/-/-)

Today you will visit the Pyramids and Sphinx - reckoned by the Greeks to be one of the Seven Wonders of the World. A single pyramid is built from 2,300,000 blocks, each weighing approximately two and one-half tons. In the face of such immensity, one cannot help but feel the awe and wonder which so many writers and artists have sought to convey over the centuries. The Cheops Pyramid is particularly interesting since its interior burial chambers are open for inspection by the public. Not far from the Pyramids is the Great Sphinx of Giza, dating to the time of Chephren (2620 BC). Sculpted from natural yellowish limestone and standing 65 feet high & 187 feet long, this unforgettable statue combines the head of a Pharaoh with a lion's body. Afterwards, enjoy lunch at a local restaurant (on own expense).

We will then continue our journey to the Citadel, situated on a highly visible spur of the Mokattam Hills of Old Cairo, was the nerve center of Egypt for nearly 700 years. Construction of the grand structure began in 1176 and was completed by Muhammad Ali Pasha, ruler of Egypt in the

late 19th century. Mamluk sultans and Turkish governors resided in the Citadel; one of the world's most fascinating monuments of medieval warfare. Facing the Citadel is the Mosque of Sultan Hassan, built between 1356 and 1363 and perhaps the most majestic monument of Arab architecture in Egypt. The Mosque of Al-Rifai was constructed in two phases over the period between 1869 and 1912 when it was finally completed. The tour also includes a visit to Khan El Khalili, known as the Turkish bazaar during the Ottoman period. It was built in 1382 by Emir Djaharks ElKhalili, in the heart of what was then Fatimid City. Until this day, the bazaar remains a center of trade and communion in the city and offers a wide array of antiques, handcrafts of gold, silver and copper, as well as old coffee shops and local restaurants which attract Egyptians and tourists alike.

Evening return back to the hotel. Overnight in Cairo.

DAY 9: WED CAIRO - USA

After breakfast you will be transferred to Cairo airport to board your flight back home.

DOES NOT INCLUDE:

- Items of personal nature, tips, and gratuities
- Optional excursions
- Travel insurance
- Baggage fees may apply, and vary by carrier
- Visa fees (currently \$25 p/p payable in CASH at Cairo airport)
- Any other items not under inclusions.



BFC NOW MEANS BETTER, FASTER COFFEE



We know that better water makes a better cup of coffee, so our Sterling Culligan Water team is excited to introduce the Keurig K155 Office Pro! Employees can now enjoy their favorite drinks (coffee, tea, hot chocolate or iced beverages) in one minute or less. And because the brewing systems can be directly linked to your Culligan® Bottle-Free® cooler, you'll never have to worry about refilling the water reservoir.

BENEFITS OF ADDING THE K155 OFFICE PRO:

- ✓ Brewing systems can be directly connected to Culligan® Bottle-Free® coolers for a fresh, ever-flowing water supply. **No more refilling!**
- ✓ Fully programmable brewer allows you to adjust the desired brew temperature
- ✓ More than 500 varieties and 75 brands of coffee, tea and specialty beverages available
- ✓ Systems can be connected to Culligan® Bottle-Free® coolers for a fresh, ever-flowing water supply

57% of workers say they need at least two cups of coffee per day. Save time and money by offering premium coffee and better water in your office.

CALL TODAY FOR UPGRADE SPECIALS!



Culligan Water™

STERLING CULLIGAN WATER

Eau Claire, WI 715-834-9431 | Rothschild, WI 715-355-7060
Waupaca, WI 715-258-2242 | Sauk Centre, MN 320-352-6587

SterlingCulliganWater.com

CULLIGAN COOLERS ARE BETTER FOR COMPANIES



IMPROVING EMPLOYEE SAFETY AND HYDRATION

With powerful filtration technology, constant disinfection and hands-free dispensing, Culligan® Bottle-Free® water coolers are the healthier, safer choice for drinking water as you return to the office.

SAFER WATER IN THE PALM OF YOUR HAND

With more widespread calls for stricter sanitary measures and practices, as well as a heightened risk of refilling the same cup or personal water bottle, Culligan Water's single-use cups help curb the spread of germs.

To help maintain your health and those around you, please contact your local Culligan expert for more information.



Culligan Water™

STERLING CULLIGAN WATER

Eau Claire, WI 715-834-9431 | Rothschild, WI 715-355-7060
Waupaca, WI 715-258-2242 | Sauk Centre, MN 320-352-6587

SterlingCulliganWater.com

PERSPECTIVES is published on a monthly basis for the members and supporters of the Marshfield area Chamber of Commerce & Industry.

MACCI is a member of:

- Association of Chamber of Commerce Executives (ACCE)
- Wisconsin Manufacturers and Commerce (WMC)
- Wisconsin Chamber of Commerce Executives (WCCE)
- Wisconsin Economic Development Corp. (WEDC)
- International Economic Development Council (IEDC)
- International Council of Shopping Centers (ICSC),
- Wisconsin Downtown Action Council (WDAC)
- SCORE (Counselors to America's Small Business)
- Transportation Development Association (TDA)
- Dairy Business Council (DBA)
- Wisconsin Economic Development Association (WEDA)

Call Us
715-384-3454

Send Mail
700 SOUTH CENTRAL AVENUE
MARSHFIELD, WI 54449

Email Us
MACCI@MARSHFIELDCHAMBER.COM

Find Us Online
WWW.MARSHFIELDCHAMBER.COM

Advertise with us!

Raise your company's visibility in a monthly newsletter that goes to the top executives, managers, and entrepreneurs in Marshfield and surrounding communities.

Perspectives is an extremely cost-effective way to get your message out to a highly targeted group of your fellow business people.

For more information, contact MACCI at **715-384-3454** or email Krystal at bowman.krystal@marshfieldchamber.com

